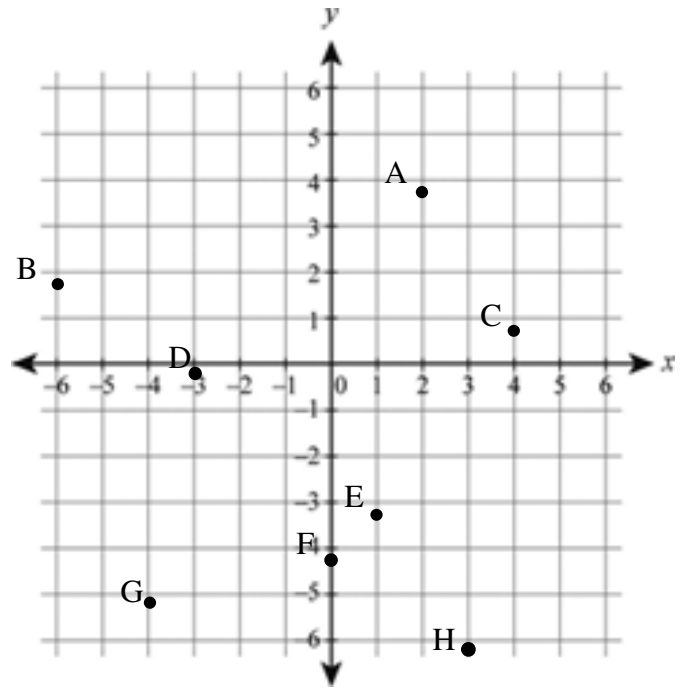


## Lesson 5.1 and 5.2 Homework

Write the coordinates of the following points.

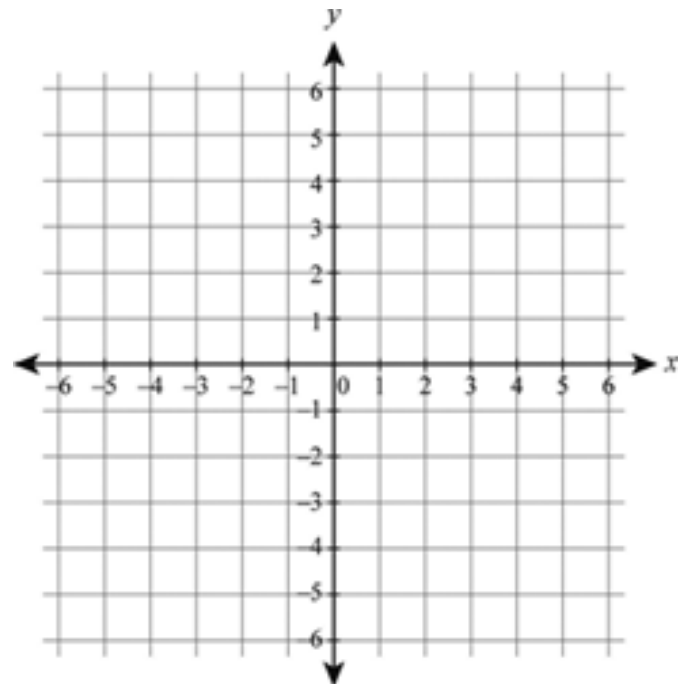
1. A
2. B
3. C
4. D
5. E
6. F
7. G
8. H



Locate the points on the graph.

- a. Write the number of the point by the dot.
- b. By the coordinates below, indicate which quadrant the point is in. If it is on an axis, state which axis it is on.

9. (3, 1) \_\_\_\_\_
10. (-5, -2) \_\_\_\_\_
11. (-1, 0) \_\_\_\_\_
12. (6, -4) \_\_\_\_\_
13. (0, 5) \_\_\_\_\_
14. (-3, 4) \_\_\_\_\_



List the domain and range of each function. List the numbers from smallest to largest.

15.  $(-4, 1), (3, 0), (5, 7), (10, 8)$
16.  $(2, -4), (1, 6), (4, -9), (5, 11), (3, 8)$

17.

x	y
-3	7
0	4
1	16
4	-1

- 18.
-

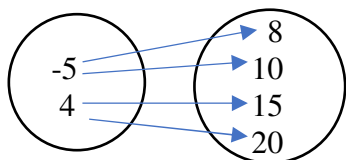
19. Look up the definition of a function in the book. Write the definition of a function.

Function –

Indicate whether the relation is a function. Just write YES or NO.

20. (4, 2), (5, 5), (6, 2), (7, -1), (8, 2)

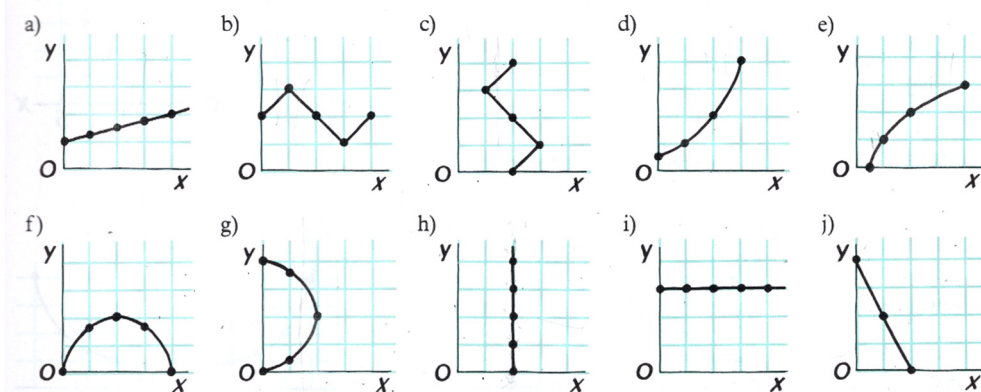
21.



22.

x	y
-10	-2
-5	3
0	-2
5	3

23. Which of the following graphs represent functions?



24. On a sheet of graph paper, plot the following points and connect them with line segments in the order they are listed (working down each column). Start a new portion of the graph after the word *end*.

(-4, 5)	(1, 5)	(6, 10)	(-4, -3)	(-6, 10)	(1, 6)
(-4, 1)	(4, 5)	(6, -7)	(-3, -4)	(-5, 11)	(2, 7)
(-1, 1)	(4, 1)	(5, -8)	(-2, -5)	(-3, 12)	(3, 7)
(-1, 5)	(1, 1)	(2, -9)	(2, -5)	(3, 12)	(5, 5)
(-4, 5)	(1, 5)	(-2, -9)	(3, -4)	(5, 11)	end
end	end	(-5, -8)	(4, -3)	(6, 10)	
		(-6, -7)	(2, -4)	(5, 9)	(-1, 2)
(-1, -1)	(-5, 5)	(-6, 10)	(-2, -4)	(2, 8)	(-2, 2)
(-1, -2)	(-3, 7)	end	(-4, -3)	(-2, 8)	(-2, 1)
(1, -2)	(-2, 7)		end	(-5, 9)	end
(1, -1)	(-1, 6)	(4, 2)		(-6, 10)	
(-1, -1)	end	(3, 2)		end	
end		(3, 1)			
		end			